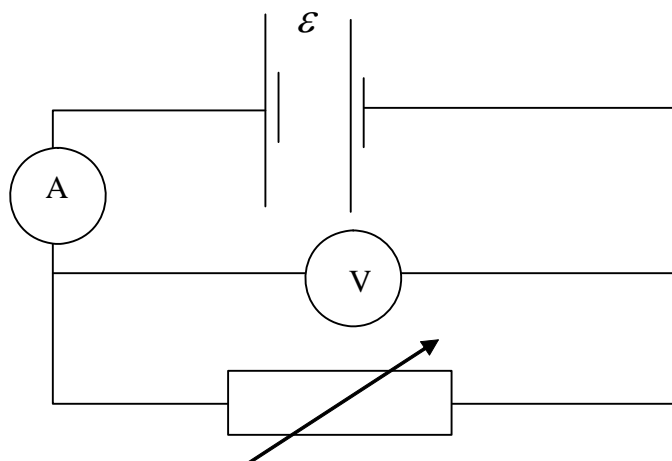


Extension Worksheet – Topic 5, Worksheet 3

- 1 In the circuit below a variable resistor is connected to a battery of emf \mathcal{E} .



The graph shows how the reading of the voltmeter (in V) varies with current (in A) as the variable resistance changes.



Use the graph to determine

- a internal resistance of the battery. [2]
- b the emf of the battery. [2]
- c the maximum current that can be established in this circuit. [2]